



GuitarU

USB2.0 High-Speed

**1 guitar-In / 2-Out Professional
guitar Recording USB Interface**



 <div style="background-color: black; color: white; padding: 2px; font-weight: bold; margin: 5px 0;">CAUTION</div> 	<p>RISK OF ELECTRIC SHOCK DO NOT OPEN RISQUE DE CHOC ELECTRIQUE NE PAS OUVRIR</p> <p>CAUTION: TO REDUCE THE RISK OF ELECTRIC SHOCK DO NOT REMOVE COVER (OR BACK) NO USER-SERVICEABLE PARTS INSIDE REFER SERVICING TO QUALIFIED PERSONNEL</p> <p>ATTENTION: POUR EVITER LES RISQUES DE CHOC ELECTRIQUE: NE PAS ENLEVER LE COUVERCLE, AUCUN ENTRETIEN DE PIECES INTERIEURES PAR L'USAGER. CONFIER L'ENTRETIEN AU PERSONNEL QUALIFIE.</p> <p>AVIS: POUR EVITER LES RISQUES D'INCENDIE OU D'ELECTROCUTION, N'EXPOSEZ PAS CET ARTICLE A LA PLUIE, OU A L'HUMIDITE</p>	<p>The lightning flash with arrowhead symbol within an equilateral triangle is intended to alert the user to the presence of uninsulated dangerous voltage within the product's enclosure, that may be of sufficient magnitude to electric shock to persons. Le symbol clair avec point de flèche à l'intérieur d'un triangle équilatéral est utilisé pour avertir l'utilisateur de la présence à l'intérieur du coffret de voltage dangereux non isolé d'ampleur suffisante.</p> <p>The exclamation point within an equilateral triangle is intended to alert the user of the presence of important operating and maintenance (servicing) instructions in the literature accompanying the appliance. Le point d'exclamation à l'intérieur d'un triangle équilatéral est employé pour avertir les utilisateurs de la présence d'instructions importantes pour le fonctionnement et l'entretien (service) dans le livret d'instruction accompagnant l'appareil.</p>
---	---	--

Important Safety Instructions

1. Read this manual thoroughly before using this unit.
2. Keep this manual for future reference.
3. Take notice of and comply with all warnings included in the user's manual or indicated on the appliance.
4. Follow all instructions included in this manual.
5. Do not expose this unit to rain or moisture. Avoid having water or other liquids spilled on this unit.
6. When cleaning the cabinet or other parts of this appliance, use only a dry or slightly damp soft cloth.
7. Do not block any ventilation openings or interfere with the proper ventilation of this unit. Install in accordance with the manufacturer's instructions.
8. Do not use or store near any heat sources such as radiators, heat registers, stoves, or other heat-producing appliances.
9. Do not interfere with the safety purpose of the polarized or grounding-type plug. A polarized plug has two blades with one wider than the other. A grounding-type plug has two blades and a third grounding prong. These are designated for your safety. If the provided plug does not fit into your outlet, consult an electrician.
10. Protect the power cord from being walked on or otherwise damaged by items placed on or against them. Particular attention should be given to the plugs, receptacles, and the point where the cord exits the appliance.
11. To avoid the risk of electrical shock, do not touch any exposed wiring while the unit is in operation.
12. Only use attachments/accessories specified by the manufacturer.
13. Unplug this unit and all connected electrical equipment during lightning storms or when left unused a long period of time.
14. Refer all servicing to qualified service personnel. Servicing is required when the appliance has been damaged in any way or fails to operate normally.

WARNING: To reduce the risk of fire or electric shock, do not expose this unit to rain or moisture

Contents

- Introduction 1
 - What's in the package 1
- Features 2
- Front/Top Panel 3
- Rear Panel 4
- Mac driver installation 5-6
- Windows driver installation 7-8
- Hardware Connections 9
- Minimum System Requirements 10
- Specifications 11
- Services 12

Introduction

Thank you for purchasing the ICON GuitarU digital audio Interface. We sincerely trust this product will provide years of satisfactory service, but if anything is not to your complete satisfaction, we will endeavor to make things right.

In these pages, you'll find a detailed description of the features of the GuitarU digital audio interface, as well as a guided tour through their front and rear panels, step-by-step instructions for its setup and use, and full specifications.

You'll also find a warranty card enclosed---please don't forget to fill it out and mail it so that you can receive online technical support at: www.icon-global.com. And so we can send you updated information about this and other ICON products in the future. As with most electronic devices, we strongly recommend you retain the original packaging. In the unlikely event the product must be returned for servicing, the original packaging (or reasonable equivalent) is required.

With proper care and adequate air circulation, your GuitarU digital audio interface will operate without any trouble for many years. We recommend that you record your serial number in the space provided below for future reference.

Please write your serial number here for future reference:

Purchased at:

Date of purchase:

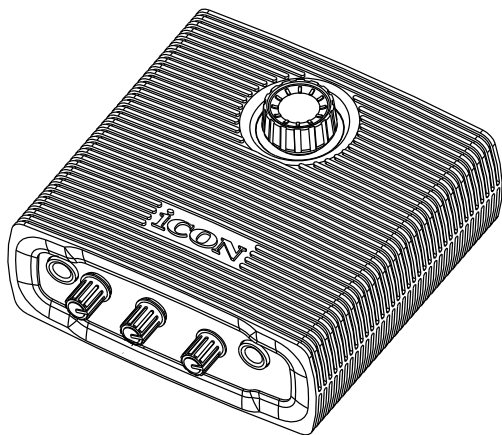
What's in the package?

- GuitarU USB Recording Interface
- Quick Start Guide
- Driver Software CD

Difference languages electronic user manual & quick start guide (pdf)

- USB cable

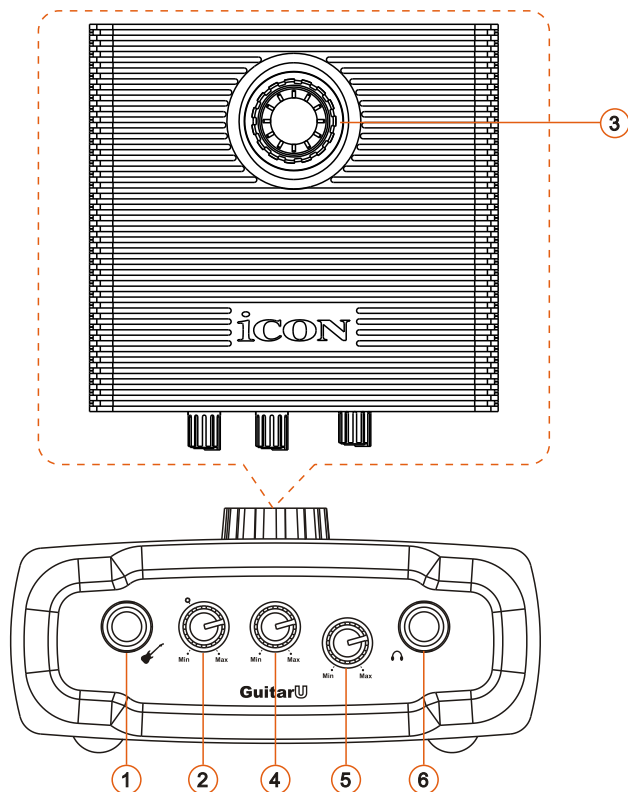
Features



The ICON GuitarU USB recording interface provides an audio input and output module with USB connectivity. Main features include:

- 24-Bit 96/192KHz 1 guitar-In/2-Out USB Recording Interface
- 2x2 analog I/O full duplex recording and playback
- ICON innovative unique guitar preamp with individual gain control.
- 2 analog outputs on 1/4" TRS jacks
- Master volume control on the top panel
- 1 headphone output with assignable source and individual volume control
- USB2.0 High Speed equipped and USB bus-powered
- Supports DirectSound, WDM and ASIO2.0
- Compatible with Mac OS (Intel-Mac) and Windows XP, Vista (32-bit/64-bit) & Windows 7 (32-bit/64-bit)
- Full duplex, simultaneous record/playback
- Rugged metal construction with rubber jacket

Front/Top Panel



① “Guitar” inputs 1/2

Unbalanced mic level inputs. This input jack accepts a standard 1/4" stereo TS connector.

② Input gain level controls 1/2

These potentiometers control the input level of their associated analog guitar input.

③ Master level control

This potentiometer controls the master output level of the analog outputs.

④ Direct monitoring control

This potentiometer controls the direct monitoring output level.

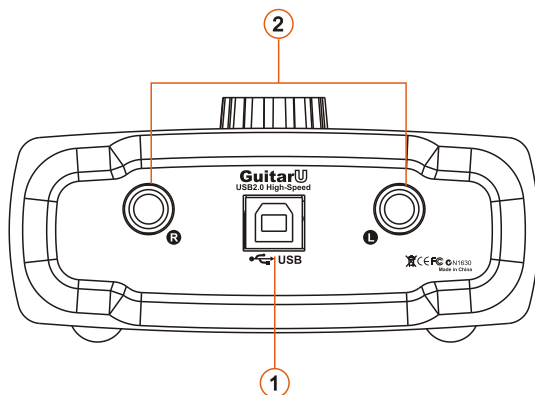
⑤ Headphone level control

This potentiometer controls the output level of the headphone output.

⑥ Headphone output

This output jack accepts a standard 1/4" stereo TRS headphone connector.

Rear Panel



① USB 2.0 Connector

Connect it with the provided USB cable to your Mac/PC's USB connector. Your Mac/PC must have a USB2.0 connector in order to run the full speed of GuitarU.

② Line outputs 1/2

These are unbalanced analog outputs on standard 1/4" TS connectors at +6dBu line level.

Mac driver installation

Please follow the step-by-step procedures below to install your GuitarU USB recording interface and its driver.

① Turn on your Mac

(Note: Do not connect the GuitarU digital audio interface to your Mac yet)

② Insert the Driver CD into your CD-Rom.

After you have inserted the provided Driver CD into your CD-Rom, a pop-up window should appear as shown in Diagram 1, then click on the "Mac" folder to open the installation files list. Click "GuitarU_Driver_2.1.8.dmg"

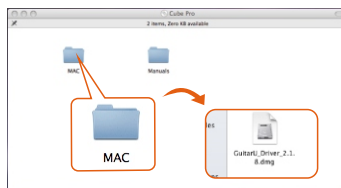


Diagram 1

③ Click "ICON Global GuitarU_2.1.8"

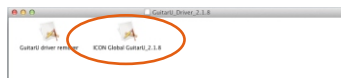


Diagram 2

④ Welcome Screen appears

Choose "Continue" when you see the Welcome Screen shown in diagram 3.

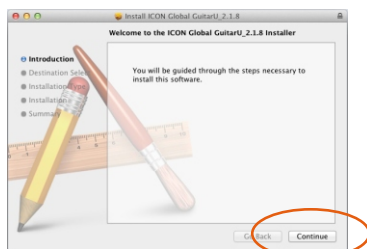


Diagram 3

⑤ Set install location

Click the "Change install location" button if you would like to set your preferred install location, otherwise click the "Install" button.

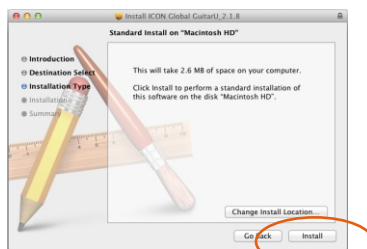


Diagram 4

⑥ Input password

Input password if there is any and click "Install Software" button.



Diagram 5

⑦ Installation start

The driver installation has started, please wait until the process has completed.

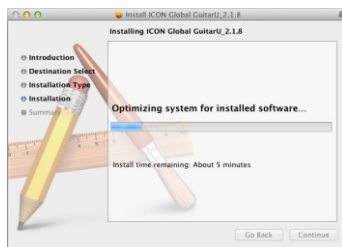


Diagram 6

⑧ Installation completed

The driver installation has completed successfully. Click the “Restart” button.

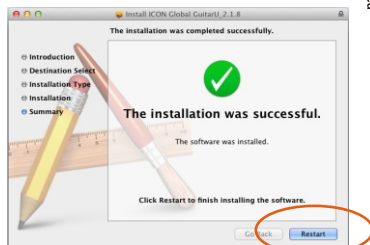


Diagram 7

⑨ Restart your Mac and connect your GuitarU to the USB port with the provided USB cable.

⑩ Audio MIDI setup

Open the “Audio MIDI setup” window and check if the GuitarU device has setup properly as shown below in diagram 8. If your GuitarU device does not appear on the system settings. It means the driver did not install properly, go through the “Driver Installation” procedure again.

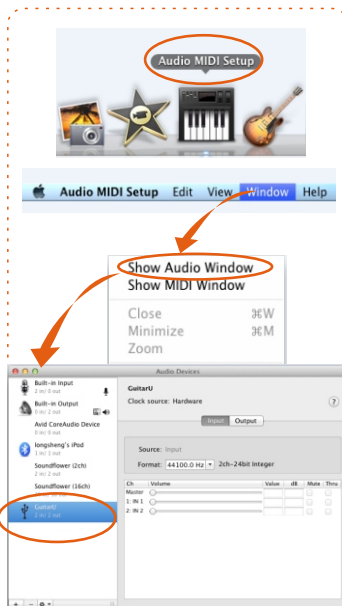


Diagram 8

Windows driver installation

Please follow the step-by-step procedures below to install your GuitarU USB recording interface and its driver.

① Turn on your computer

Note: Do not connect the GuitarU digital audio interface to your computer yet

② Insert the Driver CD into your CD-Rom.

After you have inserted the provided Driver CD into your CD-Rom, an Installation screen should appear as shown in Diagram 1, then click "Windows Driver" for the driver installation"

Note: If the Installation screen do not appear automatically. Go to the CD folder and double click "Setup"



Diagram 1

③ Select your language

Select your language and click "OK"

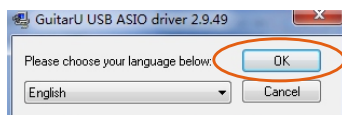


Diagram 2

④ Installation Wizard appears

Click "Install the driver" to start the driver installation.

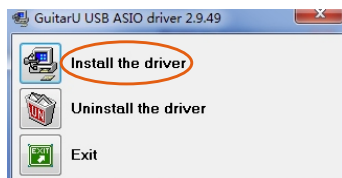


Diagram 3

⑤ ASIO driver Installation start

The ASIO driver installation process has started; the process may take some time depending on your computer performance, please be patient and wait for the process to finish.

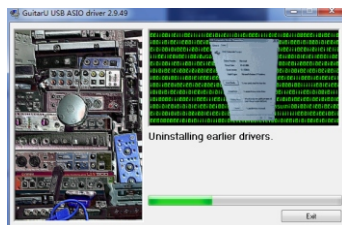


Diagram 4

- ⑥ **Connect your GuitarU**
 Connect your GuitarU to your PC with the provided USB cable.

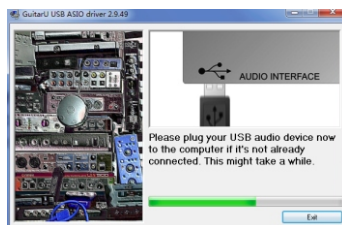


Diagram 5

- ⑦ **USB driver Installation start**
 The USB driver installation process has started; the process may take some time depending on your computer performance, please be patient and wait for the process to finish.

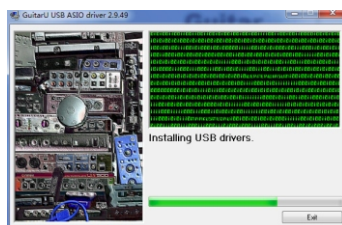


Diagram 6

- ⑧ **Setup completed**
 A window as shown in Diagram 7 should appear. Choose "Reboot now".

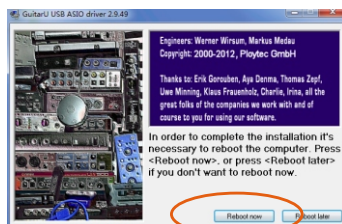


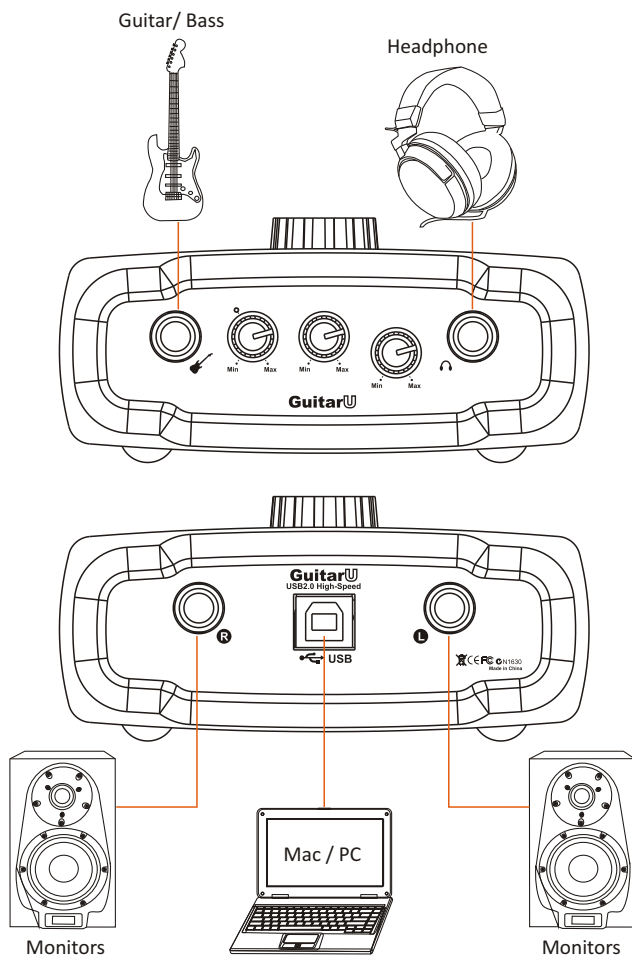
Diagram 7

Hardware Connections

Connect the GuitarU digital audio interface outputs to your amplifier, powered monitors or surround system. Two-channel stereo operation, the default outputs are channels 1 and 2.

If you are monitoring through headphones, connect your headphones to the device's headphone output.

Connect your guitar to the device's analog input.



Minimum System Requirements

Important: The GuitarU digital audio interface is supported by Mac OS (Intel-Mac), Windows XP, Windows Vista and Windows 7 (32-bit/64-bit). The GuitarU digital audio interface is not supported by Windows 98 or Windows Me. For Windows XP, you must be running SP1 or later. Visit the Windows update web pages to make sure you have the most current updates and fixes supplied by Microsoft. On the Mac, the GuitarU digital audio interface is supported by Mac OSX version 10.5.5 or later (must be Intel-Mac). Earlier versions of Mac operating systems are not supported.

Windows OP:

Pentium 4 -1.0GHz or higher

1.0Ghz RAM

DirectX 8.1 or higher

Windows XP (SP1), Windows 2000 (SP3),

Windows Vista or Windows 7

Mac OP:

Intel-Mac 1.0GHz or higher

1.0GHz RAM

OS 10.5.5 or later

Specifications

Inst Input:

Frequency Response:	22Hz to 22kHz (+/-0.1dB)
Dynamic Range:	93dB, A-weighted
Signal-to-Noise Ratio:	-93dB, A-weighted
THD+N:	<0.0061% (-90dB)
Crosstalk:	-87dB @ 1kHz
Input Impedance: Inst in:	500K Ohms, typical;
Total Gain Range:	+38dB

Line Outputs 1/2 (Stereo, Unbanced):

Frequency Response:	47Hz 22kHz (+/-0.1dB)
Dynamic Range:	100dB, A-weighted
Signal-to-Noise Ratio:	-100dB, A-weighted
THD+N: <0.003% (-90 dB)	-100dB @ 1kHz
Crosstalk:	Unbalanced: +4dBV, typical;
Nominal Output Level:	+11dBV, typical;
Maximum Output Level:	150 Ohm
Output Impedance:	600 Ohm minimum
Load Impedance:	

Headphone Outputs: 1 & 2 (at Maximum Volume; Into 100 Ohm load):

Frequency Response:	47Hz to 22kHz (+/-1dB)
Power into Ohms:	90 mW into 100 Ohms
THD+N:	<0.06% (-66dB)
Signal-to-Noise Ratio:	-90dB, A-weighted
Max Output Level into 100 Ohms:	+2.0dBV, typical
Output Impedance:	75 Ohm
Load Impedance:	32 to 600 Ohms

Services

If your GuitarU needs servicing, follow these instructions.

1. Ensure the problem is not related to operation error or external system devices.
2. Keep this owner's manual. We don't need it to repair the unit.
3. Pack the unit in its original packaging including end card and box. This is very important. If you have lost the packaging, please make sure you have packed the unit properly. ICON is not responsible for any damage that occurs due to non-factory packing.
4. Ship to the ICON tech support center or the local return authorization.

U.S. OFFICE:

ICON Digital Corporation
8001 Terrace Ave., Suite 201
Middleton, WI, 53562
USA

ASIA OFFICE:

ICON (Asia) Corp.
Unit 807-810, 8/F., Sunley Centre,
No. 9 Wing Yin Street, Kwai Chung, NT.,
Hong Kong.

5. For additional update information please visit our website at:
www.icon-global.com



iCON®
www.icon-global.com
info@icon-global.com

